



UL Verification Services Inc.
7036 Snowdrift Road
Allentown, PA 18106
610-774-1300

Photometric Test Report

Relevant Standards
IES LM-79-2008, ANSI C82.77-2002

Prepared For
Auroralight Inc

2742 Loker Ave W
#100
Carlsbad, CA 92010-6619
United States

Catalog Number
HDL11-6-M-27 (6W, 25° OPTIC, 2700K)

Order Number
12250114
Test Number
12250114.131

Report Date

2018-05-09

Prepared By

Sean Gregory, Project Handler

Approved By

Alexa Lambert, Project Handler

The results contained in this report pertain only to the tested sample.
This report shall not be reproduced, except in full, without written approval of Underwriters Laboratories.
This report must not be used by the client to claim product certification, approval, or endorsement by
NVLAP, NIST, or any agency of the Federal Government.



Luminaire Description: Cylindrical metal housing with clear glass lens and internal LED module
Lamp: One (1) Cree XHP 2700K LED with 25°, medium silicone optic
Mounting: Pendant
Ballast/Driver: Integrated

Note: This report has been pro-rated using data from report numbers 12250114.130, 12250114.01, 12250114.02, 12250114.03, 12250114.04, 12250114.05, and 12250114.06 to account for differences in color temperature.

Luminaire



Luminaire Characteristics

Luminous Diameter: 1.50 in.

Summary of Results

Roadway Classification: Type V, Very Short
Cutoff Classification: Cutoff
BUG Rating: B1 U1 G0

Test Conditions

Test Temperature: 24.5 °C
Voltage: 12.03 VAC
Current: 0.5183 A
Power: 6.167 W
Power Factor: 0.989
Frequency: 60 Hz
Current THD: 8.15 %

Tested in 30 planes left side, 30 planes right side, left and right averaged
Vertical test increments are 2.5 degrees
Test distance exceeds five times the greatest luminous opening of luminaire

Laboratory results may not be representative of field performance
Ballast factors have not been applied



Distribution - Goniophotometer

Distribution Test Conditions

Temperature	Voltage	Current	Power	Power Factor	Frequency	Current THD
24.5 °C	12.03 VAC	0.5183 A	6.167 W	0.989	60 Hz	8.15 %

Summary of Results

Spacing Criteria

0-180: 0.45

90-270: 0.45

Total Lumen Output:

345.0 Lumens

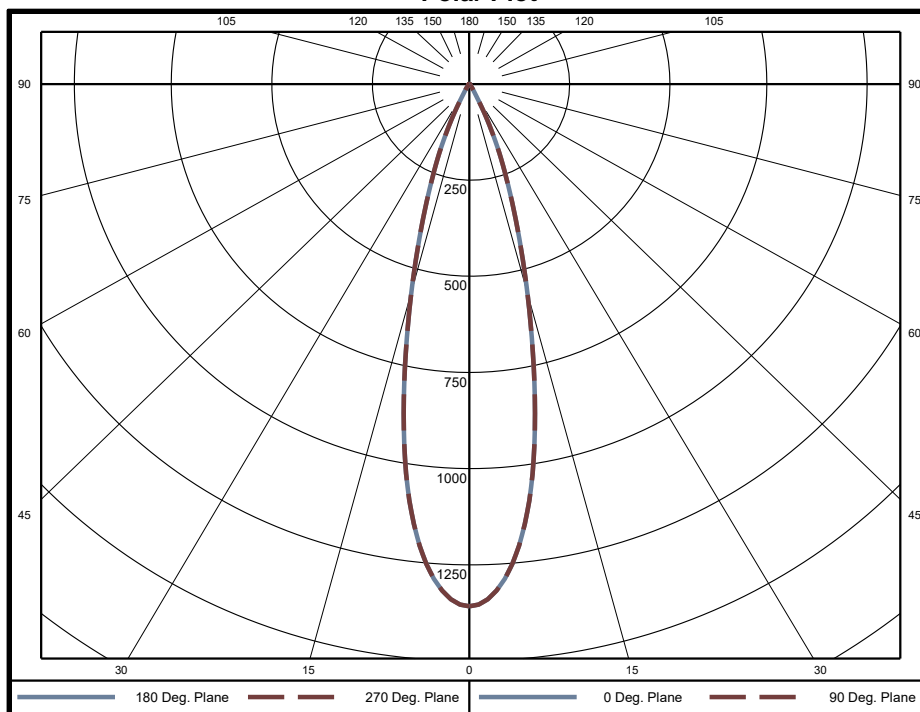
Luminaire Efficacy:

55.9 lm/w

Maximum Candela:

1358 Candela

Polar Plot



Zonal Lumen Summary

Zone	Lumens	% of Luminaire	Zone	Lumens	% of Luminaire	Zone	Lumens	% of Luminaire
0-5	31.19	9.0%	60-65	0.42	0.1%	120-125	0	0.0%
5-10	78.68	22.8%	65-70	0.28	0.1%	125-130	0	0.0%
10-15	88.35	25.6%	70-75	0.22	0.1%	130-135	0	0.0%
15-20	69.39	20.1%	75-80	0.16	0.0%	135-140	0	0.0%
20-25	43.94	12.7%	80-85	0.10	0.0%	140-145	0	0.0%
25-30	18.34	5.3%	85-90	0.05	0.0%	145-150	0	0.0%
30-35	6.03	1.7%	90-95	0.00	0.0%	150-155	0	0.0%
35-40	3.10	0.9%	95-100	0	0.0%	155-160	0	0.0%
40-45	1.74	0.5%	100-105	0	0.0%	160-165	0	0.0%
45-50	1.23	0.4%	105-110	0	0.0%	165-170	0	0.0%
50-55	1.03	0.3%	110-115	0	0.0%	170-175	0	0.0%
55-60	0.76	0.2%	115-120	0	0.0%	175-180	0	0.0%

Zone	Lumens	% of Luminaire
0-40	339	98.3%
0-60	344	99.6%
0-90	345	100.0%
90-180	0	0.0%



Candela Tabulation
Horizontal Angle (Degrees)

Vertical Angle (Degrees)	0	22.5	45	67.5	90	112.5	135	157.5	180	202.5	225	247.5	270	292.5	315	337.5
	0	1358	1358	1358	1358	1358	1358	1358	1358	1358	1358	1358	1358	1358	1358	1358
	5	1252	1252	1252	1252	1252	1252	1252	1252	1252	1252	1252	1252	1252	1252	1252
	10	950	950	950	950	950	950	950	950	950	950	950	950	950	950	950
	15	573	573	573	573	573	573	573	573	573	573	573	573	573	573	573
	20	302	302	302	302	302	302	302	302	302	302	302	302	302	302	302
	25	131	131	131	131	131	131	131	131	131	131	131	131	131	131	131
	30	33	33	33	33	33	33	33	33	33	33	33	33	33	33	33
	35	13	13	13	13	13	13	13	13	13	13	13	13	13	13	13
	40	6	6	6	6	6	6	6	6	6	6	6	6	6	6	6
	45	3	3	3	3	3	3	3	3	3	3	3	3	3	3	3
	50	3	3	3	3	3	3	3	3	3	3	3	3	3	3	3
	55	2	2	2	2	2	2	2	2	2	2	2	2	2	2	2
	60	1	1	1	1	1	1	1	1	1	1	1	1	1	1	1
	65	1	1	1	1	1	1	1	1	1	1	1	1	1	1	1
	70	0	0	0	0	0	0	0	0	0	0	0	0	0	0	0
	75	0	0	0	0	0	0	0	0	0	0	0	0	0	0	0
	80	0	0	0	0	0	0	0	0	0	0	0	0	0	0	0
	85	0	0	0	0	0	0	0	0	0	0	0	0	0	0	0
	90	0	0	0	0	0	0	0	0	0	0	0	0	0	0	0
	95	0	0	0	0	0	0	0	0	0	0	0	0	0	0	0
	100	0	0	0	0	0	0	0	0	0	0	0	0	0	0	0
	105	0	0	0	0	0	0	0	0	0	0	0	0	0	0	0
	110	0	0	0	0	0	0	0	0	0	0	0	0	0	0	0
	115	0	0	0	0	0	0	0	0	0	0	0	0	0	0	0
	120	0	0	0	0	0	0	0	0	0	0	0	0	0	0	0
	125	0	0	0	0	0	0	0	0	0	0	0	0	0	0	0
	130	0	0	0	0	0	0	0	0	0	0	0	0	0	0	0
	135	0	0	0	0	0	0	0	0	0	0	0	0	0	0	0
	140	0	0	0	0	0	0	0	0	0	0	0	0	0	0	0
	145	0	0	0	0	0	0	0	0	0	0	0	0	0	0	0
	150	0	0	0	0	0	0	0	0	0	0	0	0	0	0	0
	155	0	0	0	0	0	0	0	0	0	0	0	0	0	0	0
	160	0	0	0	0	0	0	0	0	0	0	0	0	0	0	0
	165	0	0	0	0	0	0	0	0	0	0	0	0	0	0	0
	170	0	0	0	0	0	0	0	0	0	0	0	0	0	0	0
	175	0	0	0	0	0	0	0	0	0	0	0	0	0	0	0
	180	0	0	0	0	0	0	0	0	0	0	0	0	0	0	0

Average Luminance (cd/m²)
Horizontal Angle (Degrees)

Vertical Angle (Degrees)	0	45	90
	0	1191000	1191000
	45	4319	4319
	55	3172	3172
	65	1335	1335
	75	1190	1190
	85	1257	1257



Utilization of Lumens - Zonal Cavity Method

Effective Floor Cavity Reflectance 20%																		
Ceiling Cavity Reflectance	80				70				50			30			10			0
Wall Reflectance	70	50	30	10	70	50	30	10	50	30	10	50	30	10	50	30	10	0
Room Cavity Ratio (RCR)	** Values are expressed as Lumens delivered to the task surface **																	
0	411	411	411	411	401	401	401	401	383	383	383	367	367	367	352	352	352	345
1	396	389	382	376	388	382	376	370	368	363	359	355	352	348	344	341	338	332
2	383	370	360	351	376	364	355	347	354	346	339	344	338	332	335	330	325	320
3	370	354	341	331	364	349	338	328	341	331	323	333	325	318	325	319	314	309
4	358	339	325	315	353	336	323	313	329	318	309	322	313	306	317	309	303	298
5	347	326	312	301	342	323	310	300	318	306	297	313	303	295	308	299	292	289
6	337	315	300	289	333	312	298	288	308	296	287	303	293	285	299	290	283	279
7	327	304	289	279	323	302	288	278	298	286	277	295	284	276	291	282	274	271
8	318	294	280	269	314	293	279	269	289	277	268	286	275	267	283	273	266	263
9	309	285	271	261	306	284	270	261	281	268	260	278	267	259	276	266	258	255
10	300	277	263	253	298	275	262	253	273	261	252	271	260	252	269	258	251	248

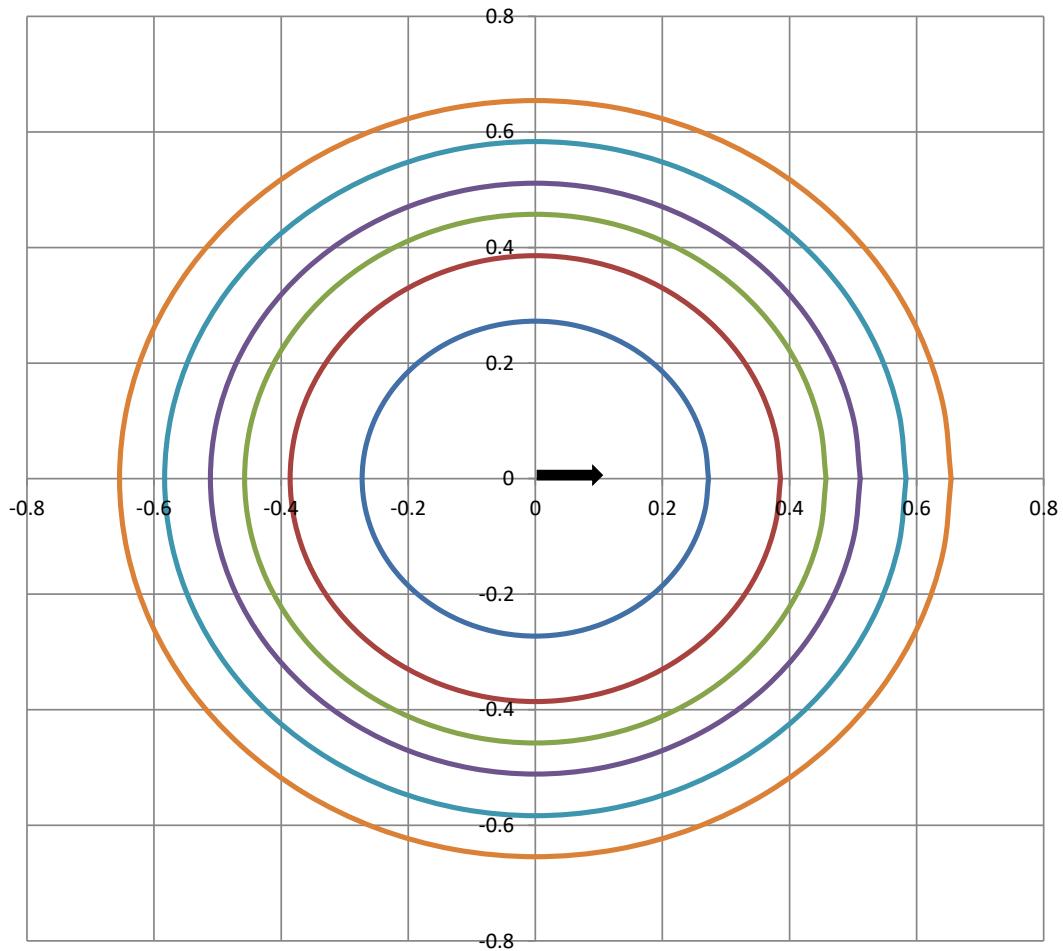
Beam and Field Information	
CIE Type:	Direct
Center Beam Intensity:	1358 Candela
Central Cone Intensity:	1320 Candela
Beam Flux:	172.0 Lumens
Beam Angle (0-180):	27.0 Degrees
Beam Angle (90-270):	27.0 Degrees
Field Angle (0-180):	49.7 Degrees
Field Angle (90-270):	49.7 Degrees

Cone of Light Tabulation			
Mounting Height (Feet)		Footcandles at Nadir	Diameter (Feet)
4.00		84.9	1.82
6.00		37.7	2.72
8.00		21.2	3.63
10.0		13.6	4.54
12.0		9.43	5.45
14.0		6.93	6.35
16.0		5.30	7.26



ISOFootcandle Plot

Mounting Height - 10 Feet



Grid Lines in Units of Mounting Height

5 fc 2 fc 1 fc 0.5 fc 0.2 fc 0.1 fc



IES "BUG" Rating
(Back Light, Uplight, Glare)
Per IES TM-15-11



Luminaire Classification System (LCS)

LCS	Zone	Lumens	Luminaire %
FL	(0-30)	165.1	47.8%
FM	(30-60)	7.0	2.0%
FH	(60-80)	0.5	0.2%
FVH	(80-90)	0.1	0.0%
BL	(0-30)	165.1	47.8%
BM	(30-60)	7.0	2.0%
BH	(60-80)	0.5	0.2%
BVH	(80-90)	0.1	0.0%
UL	(90-100)	0.0	0.0%
UH	(100-180)	0.0	0.0%
Total		345.6	100.0%
BUG Rating	B1 U1 G0		